

## Welcome to your Insider's Guide.


### Table of Contents

---

Introduction	2
Weather	3
Local Sports	5
Golf Courses	9
Schools	13
Things To Do And See	17
Directory	26
Contact Information	38

# WELCOME COLUMN

# BUS







## Welcome to Columbus!

Columbus, Ohio is a vibrant city known for its rich arts scene, diverse food and drink options, and ample green spaces. The Short North Arts District is a hub for galleries, restaurants, and nightlife, while the North Market offers local cuisine and fresh produce. The city features parks like the Scioto Mile and the Franklin Park Conservatory. Sports fans can enjoy teams like the Ohio State Buckeyes and Columbus Crew. With a relatively low cost of living and a population of over 2 million, Columbus is comparable in size to cities like Las Vegas and San Antonio.

This guide is designed to give you a brief overview of what Columbus has to offer. For more information about Influence Relocation, please visit our website:

[InfluenceRelocation.com](https://www.influencerelocation.com)



# Weather

Columbus experiences long, warm, and humid summers, with short, cold, snowy, and windy winters. It remains partly cloudy throughout the year, with temperatures ranging from 22°F to 84°F. The best time to visit for warm-weather activities is from mid-June to mid-September. Here’s a breakdown of the average weather:



Average Temperature

53°



Average Annual Rainfall

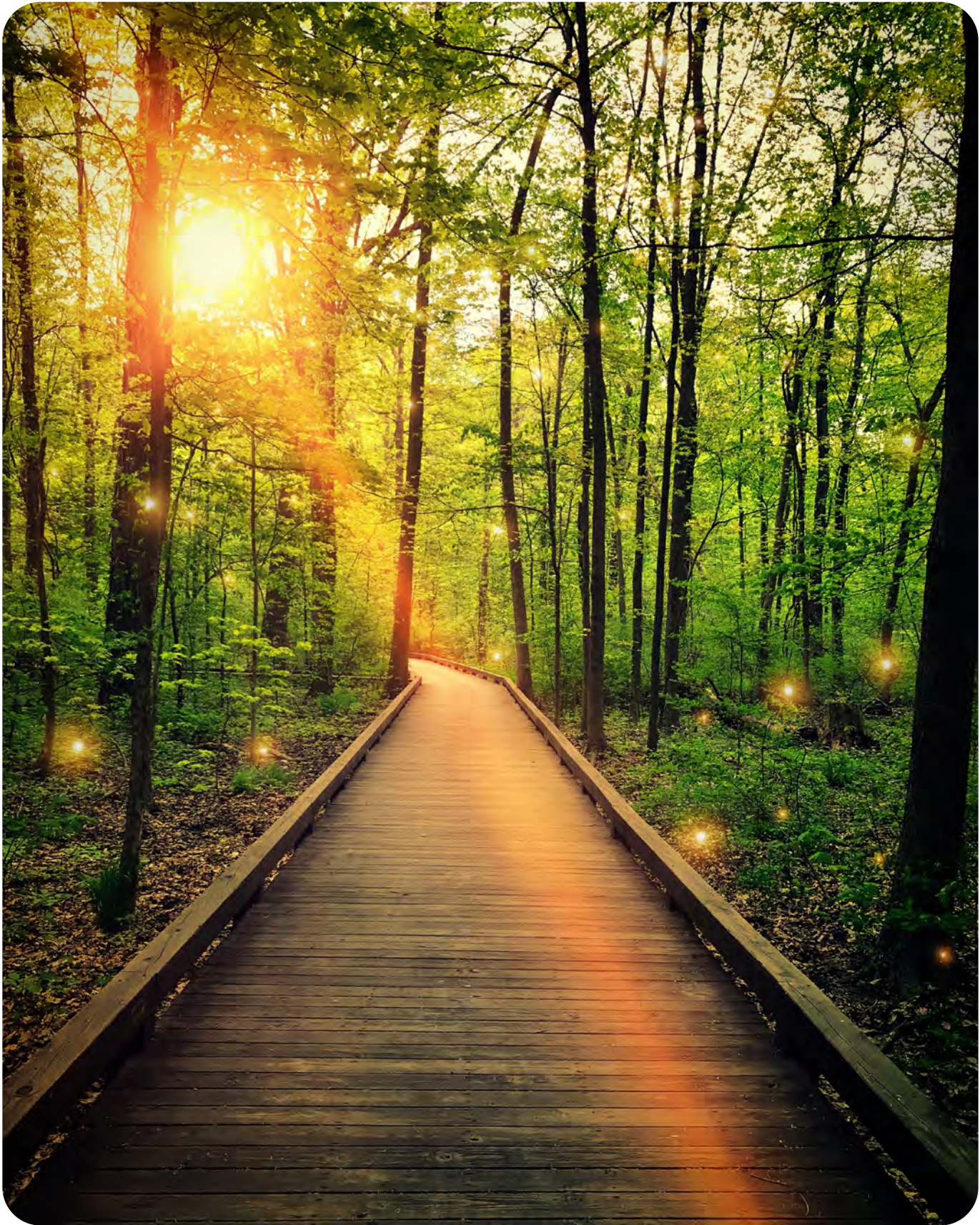
37"



Weather Patterns

Humid

	Jan	Feb	Mar	Apr	May	Jun	Jul	Aug	Sep	Oct	Nov	Dec
High	37°	41°	52°	64°	73°	81°	84°	83°	76°	65°	52°	41°
Low	24°	26°	34°	44°	54°	62°	66°	64°	57°	46°	37°	28°
Rain	1.7"	1.6"	2.4"	3.1"	3.5"	3.4"	3.1"	2.5"	2.3"	2.3"	2.4"	2.3"







# Local Sports

Columbus boasts a variety of sports teams and events, including the NHL's Blue Jackets, MLS's Columbus Crew, and Triple-A baseball's Columbus Clippers. Ohio State Buckeyes offer 36 Division I sports, including their renowned football team. The Greater Columbus Sports Commission brings major events like the USA Fencing Championships to the city.

## Columbus Blue Jackets

The NHL's only Ohio franchise, the Blue Jackets play in the Eastern Conference and are inspired by Ohio's Civil War history. They play at Nationwide Arena from mid-September to mid-April.

Sport: Hockey	Founded: 1997	Stadium: Nationwide Arena
---------------	---------------	---------------------------

## Columbus Crew

The MLS soccer team has won the MLS Cup and Supporter's Shield, and qualified for the CONCACAF Champions League. They play at Lower.com Field and their season runs from March to October.

Sport: Soccer	Founded: 1994	Stadium: Lower.com Field
---------------	---------------	--------------------------

## Columbus Clippers

The Triple-A affiliate of the Cleveland Guardians, the Clippers play at Huntington Park, which some say is the best ballpark in America. Their season runs from April to September.

Sport: Baseball	Founded: 1977	Stadium: Huntington Park
-----------------	---------------	--------------------------



### Ohio State Buckeyes

The Buckeyes have 36 Division I sports, including football, baseball, and men's basketball. They are one of the most successful college football teams in history, winning eight national championships.

Sport: Football

Founded: 1890

Stadium: Ohio Stadium “The Shoe”

### Columbus Fury

In 2024, the Columbus Fury joined the newly formed Pro Volleyball Federation (PVF), starting their inaugural season alongside six other teams. The Fury plays home matches at Nationwide Arena as part of a 24-game schedule, featuring many former Ohio State University athletes. This brings a unique sense of sports pride to Columbus, especially for volleyball fans.

Sport: Hockey

Founded: 1997

Stadium: Nationwide Arena





# Golf Courses

Columbus offers a variety of golf courses, including public, private, and university options. Within 15 miles of Columbus, there are 53 golf courses, including 25 public and 28 private courses, offering diverse layouts and hole configurations. The public Champions Golf Course, known for its difficulty, opened in 1922 and was expanded to 18 holes in 1954.

## Country Clubs

Brookside Golf & Country Club	614.889.2581		<a href="http://brooksidegcc.com">brooksidegcc.com</a>
Columbus Country Club	614.861.0800		<a href="http://columbuscc.com">columbuscc.com</a>
Jefferson Country Club	614.759.7500		<a href="http://jeffersoncountryclub.com">jeffersoncountryclub.com</a>
Kinsale Golf and Fitness Club	740.881.6500		<a href="http://golfkinsale.com">golfkinsale.com</a>
Lakes Golf & Country Club	614.882.2582		<a href="http://lakesclub.com">lakesclub.com</a>
New Albany Country Club	614.939.8500		<a href="http://nacc.com">nacc.com</a>
Rocky Fork Country Club	614.471.7828		<a href="http://rockyforkhcc.com">rockyforkhcc.com</a>
Scioto Country Club	614.486.4341		<a href="http://sciotocc.com">sciotocc.com</a>
Scioto Reserve Country Club	740.881.9082		<a href="http://sciotoreserve.com">sciotoreserve.com</a>
The Club at Tartan Fields	614.792.0900		<a href="http://tartanfields.com">tartanfields.com</a>
The Country Club at Muirfield Village	614.764.1714		<a href="http://tccmv.com">tccmv.com</a>
The Medallion Club	614.794.6999		<a href="http://medallionclub.com">medallionclub.com</a>
Wedgewood Golf & Country Club	614.793.9600		<a href="http://wedgewoodgolfcc.com">wedgewoodgolfcc.com</a>
Worthington Hills Country Club	614.885.9516		<a href="http://worthingtonhills.com">worthingtonhills.com</a>







Public and Private Courses

Arrowhead Lakes Golf Club	740.965.5422		<a href="http://arrowheadlakesgolf.com">arrowheadlakesgolf.com</a>
Cumberland Trail Golf Club	740.964.9336		<a href="http://cumberlandtgc.com">cumberlandtgc.com</a>
Delaware Golf Club	740.362.2582		<a href="http://delawaregolfclub.com">delawaregolfclub.com</a>
Heritage Golf Club	614.777.1690		<a href="http://invitedclubs.com">invitedclubs.com</a>
Hickory Hills Golf Club	614.878.0576		<a href="http://hickoryhills.com">hickoryhills.com</a>
Mill Creek Golf Club	740.666.7711		<a href="http://millcreekgolfclub.com">millcreekgolfclub.com</a>
Muirfield Village Golf Club	614.889.6700		<a href="http://mvgc.org">mvgc.org</a>
New Albany Links Golf Club	614.855.8532		<a href="http://newalbanylinks.com">newalbanylinks.com</a>
Ohio State University Golf Club	614.514.4653		<a href="http://ohiostategolfclub.club">ohiostategolfclub.club</a>
Pinnacle Golf Club	614.539.0722		<a href="http://pinnaclegc.com">pinnaclegc.com</a>
Rattlesnake Ridge Golf Club	614.410.1313		<a href="http://rrgolfclub.club">rrgolfclub.club</a>
The Golf Club at Little Turtle	614.212.4000		<a href="http://littleturtlegolf.com">littleturtlegolf.com</a>
York Golf Club	614.885.5968		<a href="http://yorkgc.com">yorkgc.com</a>





# Schools

Columbus has several school districts. The largest, Columbus City School District, serves a diverse student body across 113 schools. Metro Schools focus on STEM education with small class sizes. Dublin Jerome High School is known for its strong academics and supportive teachers.

## School Districts

**Bexley City Schools**  
614.231.7611  
[bexleyschools.org](http://bexleyschools.org)

**Canal Winchester Local Schools**  
614.837.4533  
[cwschools.org](http://cwschools.org)

**Columbus City Schools**  
614.365.5000  
[ccsoh.us](http://ccsoh.us)

**Dublin City Schools**  
614.764.5913  
[dublinschools.net](http://dublinschools.net)

**Gahanna - Jefferson City Schools**  
614.471.7065  
[gahannaschools.org](http://gahannaschools.org)

**Grandview Heights City Schools**  
614.485.4015  
[ghschools.org](http://ghschools.org)

**Groveport Madison Local Schools**  
614.492.2520  
[gocruisers.org](http://gocruisers.org)

**Hamilton Local Schools**  
614.491.8044  
[hamilton-local.k12.oh.us](http://hamilton-local.k12.oh.us)

**Hilliard City Schools**  
614.921.7001  
[hilliardschools.org](http://hilliardschools.org)

**New Albany - Plain Local Schools**  
614.855.2040  
[napls.us](http://napls.us)



Private Schools

<b>Acton Academy Columbus</b> 614.603.7227 <a href="http://actonacademycolumbus.com">actonacademycolumbus.com</a>	<b>Columbus Academy</b> 614.475.2311 <a href="http://columbusacademy.org">columbusacademy.org</a>	<b>Marburn Academy</b> 614.433.0822 <a href="http://marburnacademy.org">marburnacademy.org</a>
<b>All Saints Academy</b> 614.231.3391 <a href="http://asacatholic.org">asacatholic.org</a>	<b>Columbus School for Girls</b> 614.252.0781 <a href="http://columbusschoolforgirls.org">columbusschoolforgirls.org</a>	<b>Northside Christian School</b> 614.882.1493 <a href="http://ncslions.org">ncslions.org</a>
<b>Almadina Academy</b> 380.232.5073 <a href="http://almadinaacademyohio.org">almadinaacademyohio.org</a>	<b>Columbus Torah Academy</b> 614.864.0299 <a href="http://torahacademy.org">torahacademy.org</a>	<b>St. Charles Preparatory School</b> 380.209.2222 <a href="http://stcharlesprep.org">stcharlesprep.org</a>
<b>Bishop Hartley High School</b> 614.237.5421 <a href="http://bishop-hartley.org">bishop-hartley.org</a>	<b>Genoa Christian Academy</b> 740.965.5433 <a href="http://genoachristianacademy.org">genoachristianacademy.org</a>	<b>Veritas Academy</b> 614.726.9988 <a href="http://veritasacademy.org">veritasacademy.org</a>
<b>Calumet Christian School</b> 614.261.8136 <a href="http://calumetchristianschool.org">calumetchristianschool.org</a>	<b>Harambee Christian School</b> 614.291.0885 <a href="http://harambeechristian.org">harambeechristian.org</a>	<b>Wellington School</b> 614.457.7883 <a href="http://wellington.org">wellington.org</a>
<b>Clintonville Academy</b> 614.267.4799 <a href="http://clintonvilleacademy.org">clintonvilleacademy.org</a>	<b>Mansion Day School</b> 614.258.4449 <a href="http://mansiondayschool.org">mansiondayschool.org</a>	<b>Worthington Christian School</b> 614.431.8215 <a href="http://worthingtonchristian.com">worthingtonchristian.com</a>



Performing Arts Schools

<b>A+ Arts Academy</b> 614.626.2250 <a href="http://aplusarts.com">aplusarts.com</a>	<b>Columbus Children's Theatre</b> 614.224.6673 <a href="http://columbuschildrenstheatre.org">columbuschildrenstheatre.org</a>	<b>Lincoln Theatre</b> 614.384.5640 <a href="http://lincolntheatrecolumbus.com">lincolntheatrecolumbus.com</a>
<b>Actors' Theatre of Columbus</b> 614.444.6888 <a href="http://theactorstheatre.org">theactorstheatre.org</a>	<b>Columbus Arts &amp; Technology Academy</b> 614.577.0900 <a href="http://columbusata.org">columbusata.org</a>	<b>Short North Stage</b> 614.725.4042 <a href="http://shortnorthstage.org">shortnorthstage.org</a>
<b>Art Garden Academy</b> 614.269.8182 <a href="http://artgardenacademy.com">artgardenacademy.com</a>	<b>Columbus Music and Art Academy</b> 614.309.2546 <a href="http://cmaacademy.org">cmaacademy.org</a>	<b>The King Arts Complex</b> 614.645.5464 <a href="http://kingartscomplex.com">kingartscomplex.com</a>
<b>Arts Impact Middle School</b> 614.365.5558 <a href="http://ccsoh.us">ccsoh.us</a>	<b>Drama Kids of North Columbus</b> 740.201.1070 <a href="http://dramakids.com">dramakids.com</a>	<b>Upper Arlington Performing Arts Center</b> 614.487.5000 <a href="http://uahs.uaschools.org">uahs.uaschools.org</a>
<b>Broadway2LA Acting Studio</b> 614.572.9005 <a href="http://broadway2la.com">broadway2la.com</a>		





# Things To Do And See

Discover the beautiful Franklin Park Conservatory and Botanical Gardens, explore local culture at North Market, and stroll through the charming German Village. For shopping and dining, Easton Town Center offers around 300 options. Don't miss the Columbus Zoo and Aquarium or a game at Ohio Stadium, home of the Ohio State Buckeyes.

## Alum Creek Trail

Back Bay National Wildlife Refuge spans over 9,200 acres of diverse habitats. It offers trails through marshes and woodlands, impoundment views, and access to False Cape State Park. Visitors can enjoy bird watching, hiking, and canoeing or kayaking.

614.645.3300  
[columbusrecparks.com](http://columbusrecparks.com)

## Antrim Park

Antrim Park is a 122.62 acre park surrounded by a quarried lake and the Olentangy Greenway Trail, great for running, walking, biking or skating.

614.645.3300  
[columbusrecparks.com](http://columbusrecparks.com)

## Battelle Darby Creek Metro Park

Battelle Darby Creek Metro Park is a metropolitan park in Central Ohio, owned and operated by Columbus and Franklin County Metro Parks.

614.370.6254  
[metroparks.net](http://metroparks.net)

## Billy Ireland Cartoon Library & Museum

The Billy Ireland Cartoon Library & Museum is a research library of American cartoons and comic art affiliated with the Ohio State University library system in Columbus, Ohio.

614.292.0538  
[cartoons.osu.edu](http://cartoons.osu.edu)



Center of Science and Industry

This large educational science center offers interactive exhibits, working labs & planetarium shows.

614.228.2674  
[cosi.org](http://cosi.org)

Columbus Zoo & Aquarium

The Columbus Zoo and Aquarium, located near Powell, Ohio, is a renowned non-profit zoo widely recognized due to the efforts of director emeritus Jack Hanna, and was named the number one zoo in the U.S. by USA Travel Guide in 2009 and Besties Readers Choice in 2012.

614.645.3400  
[columbuszoo.org](http://columbuszoo.org)

Franklin Park Conservatory and Botanical Gardens

The Franklin Park Conservatory and Botanical Gardens provides 88 acres of indoor/outdoor art, nature-based exhibits, greenhouses, and landscaped grounds.

614.715.8000  
[fpconservatory.org](http://fpconservatory.org)

Columbus Museum of Art

The Columbus Museum of Art is an art museum in downtown Columbus, Ohio. Formed in 1878 as the Columbus Gallery of Fine Arts, it was the first art museum to register its charter with the state of Ohio.

614.221.6801  
[columbusmuseum.org](http://columbusmuseum.org)

Grange Insurance Audubon Center

The Grange Insurance Audubon Center is a nature education and conservation center open to the public and located in the Scioto Audubon Metro Park.

614.545.5479  
[grange.audubon.org](http://grange.audubon.org)

Historic Crew Stadium

Historic Crew Stadium, previously known as Columbus Crew Stadium and Mapfre Stadium, is a soccer-specific stadium in Columbus.

614.447.2739  
[historiccrewstadium.com](http://historiccrewstadium.com)

Inniswood Metro Gardens

Situated on 123 acres, Inniswood Metro Gardens is a continual source of inspiration for central Ohioans of all ages. A natural woodland is home to native wildflowers, wildlife and waterways which provide a majestic backdrop to the beautifully landscaped gardens and lawns.

614.895.6216  
[inniswood.org](http://inniswood.org)

John F. Wolfe Columbus Commons

John F. Wolfe Columbus Commons is a 6-acre park and green space in downtown Columbus, Ohio, located on the site of the former Columbus City Center mall.

614.545.4701  
[columbuscommons.org](http://columbuscommons.org)

Hayden Falls Park

Hayden Falls Park is a 2-acre park with a 35-foot waterfall in Griggs Nature Preserve.

614.645.3300  
[visitohiotoday.com](http://visitohiotoday.com)

Hollywood Casino Columbus

Hollywood Casino Columbus offers round-the-clock entertainment with over 2,200 slots, 100 live table games, and the largest poker room in Ohio.

614.308.3333  
[hollywoodcolumbus.com](http://hollywoodcolumbus.com)

Kelton House Museum & Garden

The Kelton House Museum and Garden is a Greek Revival and Italianate mansion in the Discovery District of Downtown Columbus, Ohio.

614.464.2022  
[keltonhouse.com](http://keltonhouse.com)





LEGOLAND Discovery Center Columbus

LEGOLAND Discovery Center Columbus is the ULTIMATE indoor LEGO playground in Ohio!

614.407.7721  
[legolanddiscoverycenter.com](http://legolanddiscoverycenter.com)

Miner 49er Blacklight Mini Golf

Year-round, Western-themed miniature golf course with a casual American eatery & bar attached.

614.725.4219  
[miner49erminigolf.com](http://miner49erminigolf.com)

National Veterans Memorial and Museum

The National Veterans Memorial and Museum is the United States' national museum for veterans of the U.S. Armed Forces. The museum is located in Columbus, Ohio, along the Scioto River between Franklinton and Downtown Columbus.

888.987.6866  
[nationalvmm.org](http://nationalvmm.org)

Ohio Craft Museum

The Ohio Craft Museum is a program of Ohio Designer Craftsmen, presenting five major exhibitions each year, as well as focus exhibits and a rotating display of the permanent collection.

614.486.4402  
[ohiocraft.org](http://ohiocraft.org)

Ohio Expo Center & State Fair

The Ohio Expo Center in Columbus is a versatile 360-acre event venue with over one million square feet of space, parking for 14,000 vehicles, and seating for 20,000, conveniently located near downtown and major transport hubs, making it a key event destination in the Midwest.

614.644.3247  
[ohioexpocenter.com](http://ohioexpocenter.com)

Orton Geological Museum

The Orton Geological Museum is located in Orton Hall on the South Oval of The Ohio State University, in Columbus, Ohio. Part of the School of Earth Sciences, the Museum plays a key role in research, teaching, and outreach.

614.292.6896  
[ortongeologicalmuseum.osu.edu](http://ortongeologicalmuseum.osu.edu)

Olentangy Caverns | Rock & Gem Gift Shop

The Olentangy Indian Caverns are a series of caves, natural passages and rooms occupying three different levels. The caverns were formed millions of years ago by an underground river that cut through the limestone rock.

740.548.7917  
[olentangycaverns.com](http://olentangycaverns.com)





Otherworld

Futuristic entertainment center with interactive puzzles, immersive rooms & digitally augmented art.

614.808.6433  
[otherworld.com](http://otherworld.com)

Scioto Mile Fountain

Series of circular fountains with interactive splash pads, nightly light shows & Scioto River views.

614.645.3800  
[sciotomile.com](http://sciotomile.com)

Scioto Audubon Metro Park

Bird habitats plus hiking, fishing, volleyball, dog parks & a climbing wall on 120 riverside acres.

614.202.5197  
[metroparks.net](http://metroparks.net)

Schiller Park

Schiller Park is a 23.45-acre municipal park located in German Village, a historic neighborhood in Columbus, Ohio.

614.645.3300  
[columbusrecparks.com](http://columbusrecparks.com)



Shadowbox Live

Shadowbox Live is a unique performance-arts venue and café that stages rock musicals and sketch comedies both during the day and in the evening.

614.416.7625  
[shadowboxlive.org](http://shadowboxlive.org)

The Escape Room USA - Columbus

The Escape Room USA - Columbus is a real-life escape game located in the heart of Columbus, at the corner of High and Vine Street.

614.522.6692  
[escaperoomusa.com](http://escaperoomusa.com)

The Schottenstein Center

The Schottenstein Center is a multi-purpose venue at The Ohio State University. Opened in 1998, it hosts Ohio State Buckeyes basketball and ice hockey games, as well as concerts and other events.

614.688.3939  
[schottensteincenter.com](http://schottensteincenter.com)

ZipZone Outdoor Adventures

ZipZone is a one of a kind, outdoor experience located right in the heart of Columbus. Offering zip line tours, a tree top obstacle course, and a ground level kids park, ZipZone offers unique adventures for the whole family.

614.847.9477  
[zipzonetours.com](http://zipzonetours.com)

Tabletop Game Café

Tabletop Game Cafe serves delicious hot sandwiches, craft beer, espresso drinks and just happens to have a library of hundred and hundred of board games for you to play. A great place for friends, co-workers, date nights and families.

614.725.0328  
[tabletopgamecafe.com](http://tabletopgamecafe.com)

The King Arts Complex

The Martin Luther King Jr. Performing and Cultural Arts Complex is a historic building in the King-Lincoln Bronzeville neighborhood of Columbus, Ohio.

614.645.5464  
[kingartscomplex.com](http://kingartscomplex.com)

Wagner-Hagans Auto Museum

The Wagner-Hagans Auto Museum is a private collection in Ohio that is free and open to the public.

614.271.0888  
[automotivemuseumguide.com](http://automotivemuseumguide.com)





# Effortless Moving, Streamlined Cost.

We provide a streamlined process that saves you time, money, and frustration by utilizing our national relocation network. Whether you're in the market to buy, sell, or rent, we're here to assist you every step of the way.

### Real Estate

You will be connected to one of our certified relocation agents.

### Moving & Transportation

Finding the right moving company ensures a seamless transition.

### Rental Services

We assist you with any and all of your rental needs.

### Concierge Services

We're here to help you find support and amenities in your new community.

## Directory

This directory serves as a valuable tool for efficiently locating and accessing essential resources, such as dining establishments, healthcare facilities, public service offices, and community events. By offering comprehensive details and contact information, it aims to streamline the process of finding necessary services and participating in local activities.

### Colleges and Universities

American Institute of Alternative Medicine	614.825.6255		<a href="http://aiam.edu">aiam.edu</a>
Capital University	614.236.6011		<a href="http://capital.edu">capital.edu</a>
Central Ohio Technical College	740.366.9222		<a href="http://cotc.edu">cotc.edu</a>
Chamberlain University - Columbus	614.252.8890		<a href="http://chamberlain.edu">chamberlain.edu</a>
Columbus College of Art & Design	614.224.9101		<a href="http://ccad.edu">ccad.edu</a>
Columbus State Community College	614.287.5353		<a href="http://cscs.edu">cscs.edu</a>
Denison University	740.587.0810		<a href="http://denison.edu">denison.edu</a>
Felbry College School of Nursing	614.781.1085		<a href="http://felbrycollege.edu">felbrycollege.edu</a>
Fortis College in Columbus	855.436.7847		<a href="http://fortis.edu">fortis.edu</a>
Franklin University	877.341.6300		<a href="http://franklin.edu">franklin.edu</a>
Mount Carmel College of Nursing	614.234.4266		<a href="http://mccn.edu">mccn.edu</a>
Ohio Christian University	877.762.8669		<a href="http://ohiochristian.edu">ohiochristian.edu</a>

The business listings provided in this directory are for informational purposes only. While every effort has been made to ensure accuracy, not all listings may include complete information such as phone numbers, websites, or other contact details.



Colleges and Universities (Cont.)

Ohio Dominican University	614.251.4500		<a href="http://ohiodominican.edu">ohiodominican.edu</a>
Ohio University Lancaster	740.654.6711		<a href="http://ohio.edu">ohio.edu</a>
Ohio Wesleyan University	800.922.8953		<a href="http://owu.edu">owu.edu</a>
Otterbein University	614.890.3000		<a href="http://otterbein.edu">otterbein.edu</a>
Pontifical College Josephinum	614.885.5585		<a href="http://pcj.edu">pcj.edu</a>
Rosedale Bible College	740.857.1311		<a href="http://rosedale.edu">rosedale.edu</a>
The Ohio State University at Newark	740.366.1351		<a href="http://newark.osu.edu">newark.osu.edu</a>
Valor Christian College	614.837.4088		<a href="http://valorcollege.edu">valorcollege.edu</a>

Farmers Markets

Beechwold Farm Market	614.670.7774		<a href="#">Beechwold Farm</a>
Dublin Market at Bridge Park	614.335.2020		<a href="http://thedublinmarket.com">thedublinmarket.com</a>
German Village Farmers Market	203.257.2392		<a href="#">German Village</a>
Kuhlwein's Farm Market & Deli	614.876.2811		<a href="#">Kuhlwein's Farm Market &amp; Deli</a>
Moser's Farm Market and Barn	740.417.4287		<a href="http://mosersmarket.com">mosersmarket.com</a>
Westervelt Farms	614.271.5829		<a href="#">Westervelt Farms</a>
Westgate Farmers Market	614.500.3386		<a href="http://westgatefarmersmarket.com">westgatefarmersmarket.com</a>
Witten Farm Market	740.984.4009		<a href="http://wittenfarm.com">wittenfarm.com</a>
Worthington Farmers Market	614.547.7334		<a href="http://experienceworthington.com">experienceworthington.com</a>

Ethnic Food Markets

Bakaro International Grocery	614.368.7335		
Bista Brothers Asia Grocery LLC	614.867.5516		<a href="#">Bista Brothers</a>
CAM International Market	614.442.1888		<a href="#">CAM International Market</a>
Habesha Market	614.867.5990		<a href="#">Habesha Market</a>
International Market Foods	614.262.1488		<a href="#">International Market</a>
Istanbul Supermarket	614.451.8100		<a href="http://istanbulmarketohio.com">istanbulmarketohio.com</a>
Loyalty Market	614.439.5881		<a href="#">Loyalty Market</a>
Market District Supermarket	614.294.2186		<a href="http://marketdistrict.com">marketdistrict.com</a>
Mediterranean Foods Imports	614.263.9400		<a href="#">Mediterranean Foods</a>
Royal Market	614.252.1911		<a href="http://manta.com">manta.com</a>
Saraga International Grocery (Morse Rd)	614.447.8588		<a href="#">Saraga International</a>
Sunrise International Market	614.392.8888		<a href="http://sunrisegrocery.store">sunrisegrocery.store</a>
Yasmin International Market (Cleveland Ave)	614.895.8320		<a href="#">Yasmin International</a>
Yasmin International Market (Whitehall)	614.762.6172		<a href="#">Yasmin International</a>



Grocery Stores

Fresh Thyme Market	614.210.0349		<a href="https://www.freshthyme.com">freshthyme.com</a>
Giant Eagle Supermarket	614.268.0976		<a href="https://www.gianteagle.com">gianteagle.com</a>
Kroger Marketplace	614.416.6430		<a href="https://www.kroger.com">kroger.com</a>
Lucky's Market Clintonville	614.447.0258		<a href="https://www.luckysmarketsohio.com">luckysmarketsohio.com</a>
Market District Supermarket	614.294.2186		<a href="https://www.marketdistrict.com">marketdistrict.com</a>
Meijer	614.855.4900		<a href="https://www.meijer.com">meijer.com</a>
North Market Downtown	614.463.9664		<a href="https://www.northmarket.org">northmarket.org</a>
The Hills Market Downtown	614.702.7900		<a href="https://www.thehillsmarket.com">thehillsmarket.com</a>
Trader Joe's	614.793.8505		<a href="https://www.traderjoes.com">traderjoes.com</a>

Health Food Stores

Bexley Natural Market	614.252.3951		<a href="https://www.bexleynaturalmarket.org">bexleynaturalmarket.org</a>
Clean Eatz	614.289.3064		<a href="https://www.cleaneatz.com">cleaneatz.com</a>
Clintonville Natural Foods	614.826.4357		<a href="https://www.clintonvillennaturalfoods.com">clintonvillennaturalfoods.com</a>
SOW Plated	614.826.0028		<a href="https://www.sowplated.com">sowplated.com</a>
True Food Kitchen	614.269.8910		<a href="https://www.truefoodkitchen.com">truefoodkitchen.com</a>
Whole Foods Market	614.760.5556		<a href="https://www.wholefoodsmarket.com">wholefoodsmarket.com</a>
Vida's Plant Based Butcher	614.947.1117		<a href="https://www.vidasbutcher.com">vidasbutcher.com</a>

Furniture Stores

American Freight Furniture, Mattress, Appliance	614.861.5300		<a href="https://www.americanfreight.com">americanfreight.com</a>
Arhaus	614.847.4279		<a href="https://www.arhaus.com">arhaus.com</a>
Big Sandy Superstore	614.892.7575		<a href="https://www.bigsandysuperstore.com">bigsandysuperstore.com</a>
Coconis Furniture & Mattress 1st	740.994.0030		<a href="https://www.coconisfurniture.com">coconisfurniture.com</a>
Miller's Furniture	740.654.6852		<a href="https://www.millersfurniture.com">millersfurniture.com</a>
RENT-2-OWN Lancaster	740.689.1707		<a href="https://www.r2o.com">r2o.com</a>
Resale Furniture	614.837.5456		<a href="https://www.resalefurniture.com">Resale Furniture</a>
Vinson Fine Furniture	614.476.5858		<a href="https://www.vinsonfinefurniture.com">vinsonfinefurniture.com</a>
Was New LLC	740.919.0213		<a href="https://www.wasnewllc.com">Was New LLC</a>
Woodmasters of Greater Columbus	740.924.1585		<a href="https://www.woodmastersgreatercolumbus.com">woodmastersgreatercolumbus.com</a>





Government Agencies

Bricker Federal Office Building	614.469.6824		<a href="https://gsa.gov">gsa.gov</a>
City of Columbus - Department of Public Service	614.645.3111		<a href="https://columbus.gov">columbus.gov</a>
Columbus City Hall	614.645.3111		<a href="https://columbus.gov">columbus.gov</a>
Federal Bureau of Investigation	614.224.1183		<a href="https://fbi.gov">fbi.gov</a>
Ohio Department - Job & Family Services	614.466.6282		<a href="https://jfs.ohio.gov">jfs.ohio.gov</a>
US Department of Commerce, US Commercial Service	614.273.5157		<a href="https://trade.gov">trade.gov</a>
US General Administration	614.469.6824		<a href="https://gsa.gov">gsa.gov</a>
US Secret Services	614.469.7370		<a href="https://secretservice.gov">secretservice.gov</a>

Newspapers

Catholic Times Newspaper	614.224.5195		<a href="https://catholictimescolumbus.org">catholictimescolumbus.org</a>
Columbus Underground	614.657.9439		<a href="https://columbusunderground.com">columbusunderground.com</a>
La Voz Hispana Newspaper	614.274.5505		<a href="https://yellowpages.com">yellowpages.com</a>
Ohio Tavern News	614.228.6397		<a href="https://ohiotavernnews.com">ohiotavernnews.com</a>
Somali Link Newspaper	614.368.7300		<a href="#">Somali Link Newspaper</a>
WOSU Public Media	614.292.9678		<a href="https://wosu.org">wosu.org</a>



We take the pain  
out of relocation™

Influence Relocation partners with national  
lenders to ensure you're getting the best  
mortgage rates possible.

Save up to  
**\$3000**  
on closing costs!

Contact us for more information.

Receive up to \$3,000 in savings  
on your closing costs when you  
purchase a home through Influence  
Relocation using one of our  
preferred realtors and participating  
lenders.

Concierge@InfluenceRelocation.com  
801.347.8000



## Hospitals

Fairfield Medical Center	800.548.2627		<a href="https://www.fmchealth.org">fmchealth.org</a>
Nationwide Children's Hospital	614.722.2000		<a href="https://www.nationwidechildrens.org">nationwidechildrens.org</a>
Ohio Hospital For Psychiatry	855.612.3430		<a href="https://www.ohiohospitalforpsychiatry.com">ohiohospitalforpsychiatry.com</a>
OhioHealth Dublin Methodist Hospital	614.544.8000		<a href="https://www.ohiohealth.com">ohiohealth.com</a>
OhioHealth Grant Medical Center	614.566.9000		<a href="https://www.ohiohealth.com">ohiohealth.com</a>
OhioHealth Grove City Methodist Hospital	614.788.1000		<a href="https://www.ohiohealth.com">ohiohealth.com</a>
OhioHealth Rehabilitation Hospital	614.484.9600		<a href="https://www.ohiohealth-rehab.com">ohiohealth-rehab.com</a>
OhioHealth Riverside Methodist Hospital	614.566.5000		<a href="https://www.ohiohealth.com">ohiohealth.com</a>
OSU James Hospital	800.293.5066		<a href="https://cancer.osu.edu">cancer.osu.edu</a>
RiverVista Behavioral Hospital	614.643.5454		<a href="https://www.newvistahealth.com">newvistahealth.com</a>
Select Specialty Hospital - Columbus	614.458.9000		<a href="https://selectspecialtyhospitals.com">selectspecialtyhospitals.com</a>
The Ohio State University Wexner Medical Center	614.293.8000		<a href="https://wexnermedical.osu.edu">wexnermedical.osu.edu</a>

## News Stations

WBNS (Channel 10)	614.280.6309		<a href="https://www.10tv.com">10tv.com</a>
WCMH (Channel 4)	614.263.4444		<a href="https://www.nbc4i.com">nbc4i.com</a>
WSYX (Channel 6)	614.481.6666		<a href="https://www.abc6onourside.com">abc6onourside.com</a>
WTTE (Channel 28)	614.481.6666		<a href="https://www.myfox28columbus.com">myfox28columbus.com</a>
WWHO (Channel 23)	614.485.5300		<a href="https://www.cwcolumbus.com">cwcolumbus.com</a>

## Shopping

Carriage Place Plaza	2700 Bethel Rd, Columbus, OH 43220
Central Point Shopping Center	08 Ryan Ave, Columbus, OH 43223
Columbus Square Shopping Center	700 Columbus Square, Columbus, OH 43231
East Pointe	6916-7000 E Broad St, Columbus, OH 43213
Easton Gateway	4000 Stelzer Rd, Columbus, OH 43219
Easton Market	3740 Easton Market, Columbus, Oh 43219
Easton Town Center	160 Easton Town Ctr, Columbus, OH 43219
Gateway - University District	1574 N High St, Columbus, OH 43201
International Mall	1780 Morse Rd, Columbus, OH 43229
Kenny Centre	1141 Kenny Centre Mall, Columbus, OH 43220
Lennox Town Center	1647 Olentangy River Rd, Columbus, OH 43212
Lincoln Village Plaza Shopping Center	W Broad St, Columbus, OH 43228
Morse Centre	2100 Morse Rd, Columbus, OH 43229
Northern Lights Shopping Center	3561 Cleveland Ave #3349, Columbus, OH 43224
Olentangy Plaza	769 Bethel Rd, Columbus, OH 43214
Polaris Fashion Place	1500 Polaris Pkwy, Columbus, OH 43240
Polaris Towne Center	1319 Polaris Pkwy, Columbus, OH 43240
Tanger Outlets Columbus	400 S Wilson Rd, Sunbury, OH 43074
The Mall at Tuttle Crossing	5043 Tuttle Crossing Blvd, Dublin, OH 43016
The Shops at Worthington	7227 N High St, Worthington, OH 43085



Nightlife

16-Bit Bar+Arcade	614.222.1616		<a href="#">16-bitbar.com</a>
Avalon	614.971.9280		<a href="#">Avalon</a>
Axis Nightclub	380.239.2728		<a href="#">axisonhigh.com</a>
Big Room Bar	614.449.9612		<a href="#">Big Room Bar</a>
Club 185	614.228.3904		<a href="#">club185.com</a>
Club Diversity	614.224.4050		<a href="#">clubdiversity.com</a>
Dick’s Den	614.268.9573		<a href="#">whynotcolumbus.com</a>
District West	614.826.8060		<a href="#">districtwest614.com</a>
Forty Deuce Burlesque & Speakeasy	614.681.4242		<a href="#">fortydeuce.com</a>
Ginger Rabbit Jazz Lounge	614.929.5298		<a href="#">gingerrabbitjazz.com</a>
Good Night John Boy	614.800.5067		<a href="#">goodnightjb.com</a>
Howl at the Moon Columbus	614.568.4695		<a href="#">howlatthemoon.com</a>
Half Baked	614.670.4020		<a href="#">halfbakedbrew.com</a>
Noir Lounge			<a href="#">noircolumbus.com</a>
Park Street Tavern	614.221.4099		<a href="#">parkstreettavern.com</a>
Retro Lounge Columbus	614.916.6774		<a href="#">Retro Lounge Columbus</a>
The Cave Bar and Lounge	614.323.5258		<a href="#">the-cave-bar-lounge-columbus.com</a>
Xperience Lounge	614.944.9255		<a href="#">Xperience Lounge</a>

Restaurants

Agni	614.674.6600		<a href="#">dineatagni.com</a>
Agave & Rye	614.506.1346		<a href="#">agaveandrye.com</a>
Barcelona Restaurant and Bar	614.443.3699		<a href="#">barcelonacolumbus.com</a>
Brassica in the Short North	614.867.5885		<a href="#">brassicas.com</a>
Forno Kitchen + Bar	614.469.0053		<a href="#">fornoshortnorth.com</a>
Hyde Park Prime Steakhouse	614.224.2204		<a href="#">hydeparkrestaurants.com</a>
J. Gilbert's Wood Fired Steaks & Seafood Columbus	614.840.9090		<a href="#">jgilberts.com</a>
Jeff Ruby's Steakhouse	614.686.7800		<a href="#">jeffruby.com</a>
Lindey's	614.228.4343		<a href="#">lindeys.com</a>
Martini Modern Italian	614.224.8259		<a href="#">martinimodernitalian.com</a>
Milestone 229	614.427.0276		<a href="#">milestone229.com</a>
Mitchell's Ocean Club	614.416.2582		<a href="#">ocean-prime.com</a>
Polaris Grill	614.431.5598		<a href="#">polarisgrill.com</a>
Schmidt’s Sausage Haus Restaurant	614.444.6808		<a href="#">schmidthaus.com</a>
The Guild House	614.280.9780		<a href="#">theguildhousecolumbus.com</a>
The Pearl	614.227.0151		<a href="#">thepearlrestaurant.com</a>
The Refectory Restaurant	614.451.9774		<a href="#">refectory.com</a>
The Thurman Cafe	614.443.1570		<a href="#">thethurmancafe.com</a>
Valters at the Maennerchor	614.444.3531		<a href="#">valtersatthemaennerchor.com</a>
Veritas	614.745.3864		<a href="#">veritasrestaurant.com</a>





We look forward to assisting you during your transition. As a valued client of ours, we are confident that you will experience the difference of Influence Relocation.

**Feel free to contact us anytime  
with questions or just to chat.**

**801.347.8000**

**[Concierge@InfluenceRelocation.com](mailto:Concierge@InfluenceRelocation.com)**